

# Butterfly Life Cycle Sequencing

---

**Cut the puzzle pieces and glue them on cardstock. Connect the puzzle pieces to complete each stage, and then sequence the stages.**



# Butterfly Life Cycle Sequencing

---



# Butterfly Life Cycle Sequencing



**Stage 3**



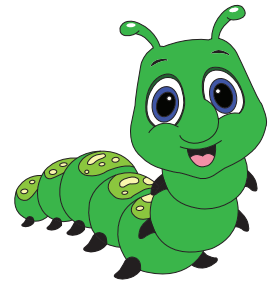
**Stage 2**



**Stage 4**



**Stage 1**



**Caterpillar**

**Butterfly**

**Eggs**

**Chrysalis**

The adult female butterfly lays its eggs on a leaf. The eggs are really small, and a caterpillar grows inside each egg.

A fully developed butterfly emerges out of the pupa after two weeks. It slowly unfolds its wet wings. Once the wings are dry, it exercises its flight muscles and is ready to fly.

The caterpillar is fully grown and stops eating. It hides in a safe space and forms a protective shell around it. It transforms into a pupa, or chrysalis.

A caterpillar hatches from the tiny egg. It is very hungry and eats constantly. It also sheds its skin 4 to 5 times.