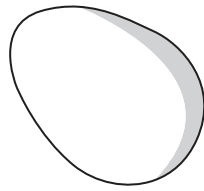


Life Cycle of a Chicken Flashcards



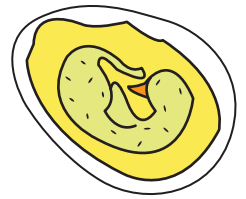
Egg

The life cycle of a chicken begins as soon as the female chicken (hen) lays eggs. The hen keeps the eggs warm by sitting on them.



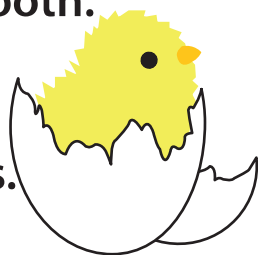
Embryo

It generally takes 21 days for the embryo to develop inside the egg. During this phase, basic tissues form, and the heart starts working.



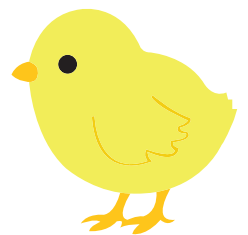
Hatchling

The chick absorbs all the nutrients from the egg into its body to support itself. It breaks open the shell with its beak or egg tooth. The hatchling is wet and fragile with wobbly legs.



Chick

As the chick gets bigger, it sprouts its first real feathers. It grows rapidly until it is furry and can control its own temperature. The chick learns to peck the ground to find food.

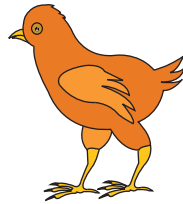


Life Cycle of a Chicken Flashcards



Pullet

A pullet is an adolescent chicken. In this stage, the chicken is all wings, legs, and patchy feathers. It is only two-third the size of an adult chicken, so it can get bullied during the pecking order.



Adult Chicken

An adult chicken lays eggs regularly for the first one to two years and then it takes a break. During this break, it molts, and fresh feathers start to appear.

