

Indefinite Articles

An **article** is a word that helps define a word as specific or unspecific. The two indefinite articles are "a" and "an". The article "a" is used before a consonant sound, and the article "an" is used before a vowel sound.

Add an indefinite article to each word.

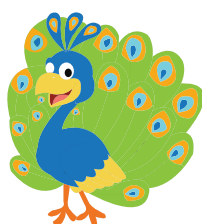
Preview

Become a member to unlock
unrestricted access to both printable
and online worksheets.

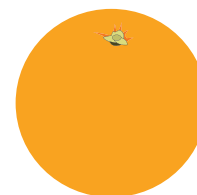


www.tutoringhour.com

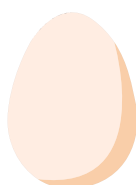
_____ peacock



_____ orange



_____ egg



_____ robot

