

# Rivers



## Source



the starting point of a river, often located in mountains, where water begins to flow

## Tributary



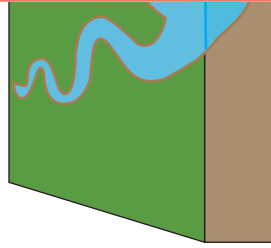
# Preview

Become a member to unlock  
unrestricted access to both printable  
and online worksheets.

[www.tutoringhour.com](http://www.tutoringhour.com)

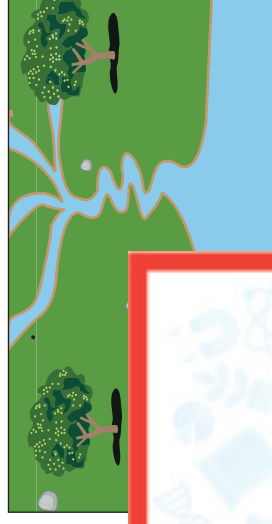
the point at which two or more rivers or streams meet and merge their waters

## Confluence



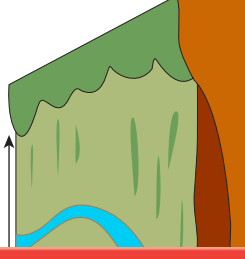
the end point of a river where it flows into a larger body of water, such as an ocean or sea

## Watershed



the area of land where all the water that falls on it drains to a particular point, such as a river or lake

## Floodplain

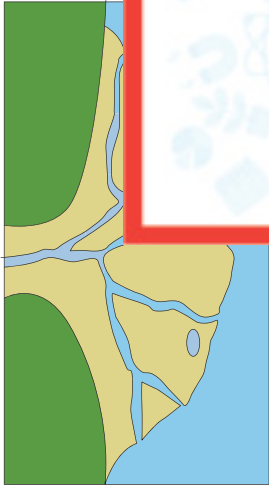


low-lying areas along a river's banks that may be covered in water during periods of flooding

# Rivers

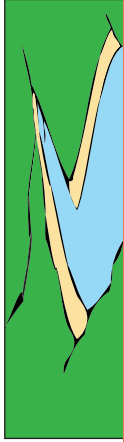


## Delta



a landform at the end of a river formed by sediment deposition, often in the shape of a triangle

## Meander



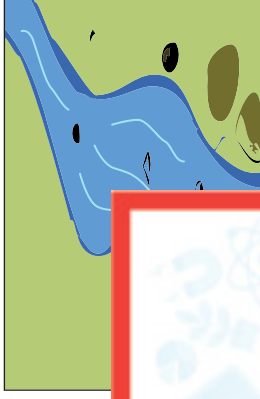
# Preview

Become a member to unlock  
unrestricted access to both printable  
and online worksheets.

[www.tutoringhour.com](http://www.tutoringhour.com)

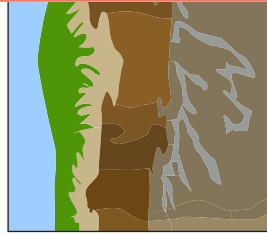
the settling of silt, sand, and other materials carried by a river as it slows down, often building up in riverbeds or deltas

## Discharge



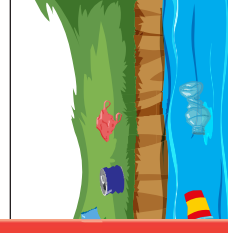
the volume of water that flows past a specific point in a river, measured in cubic meters per second

## Erosion



the process in which running water wears the land and rocks away, changing a river's course and landscape

## Pollution



the introduction of harmful substances into a river, which can have negative effects on aquatic life and the environment