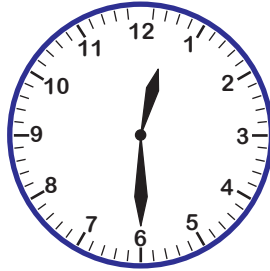


# Telling Time | A.M. and P.M.

Complete each sentence by writing the time in a.m. or p.m. as appropriate.

- 1) The midnight flight landed at \_\_\_\_\_



2)

# Preview

Become a member to unlock  
unrestricted access to both printable  
and online worksheets.



[www.tutoringhour.com](http://www.tutoringhour.com)

- 3)
- 4) Ethan starts his homework at \_\_\_\_\_



- 5) Zoey goes to her ballet class at \_\_\_\_\_



\_\_\_\_\_ after school.