

Equal Groups

Answer Key

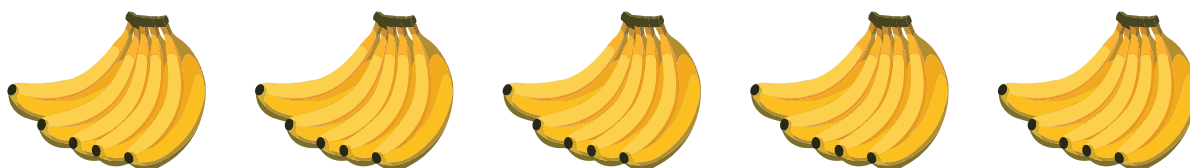
Write a multiplication equation to describe each model.

1)



$$\boxed{3} \times \boxed{4} = \boxed{12}$$

2)



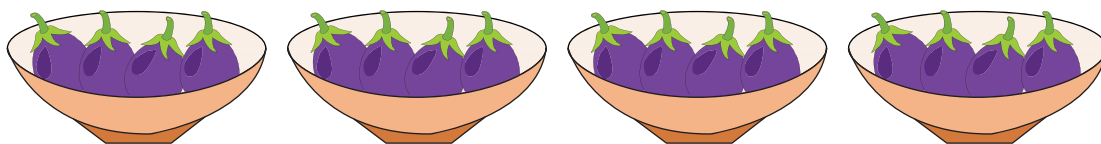
$$\boxed{5} \times \boxed{5} = \boxed{25}$$

3)



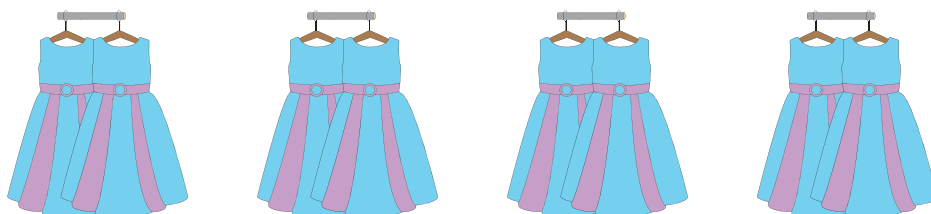
$$\boxed{2} \times \boxed{3} = \boxed{6}$$

4)



$$\boxed{4} \times \boxed{4} = \boxed{16}$$

5)



$$\boxed{4} \times \boxed{2} = \boxed{8}$$