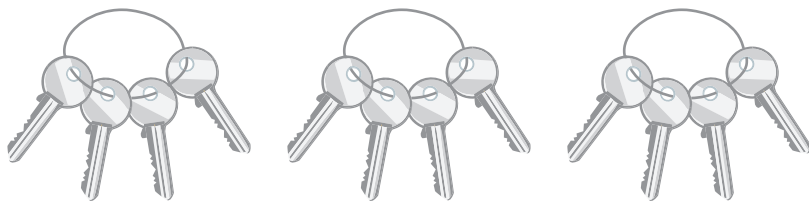


Equal Groups

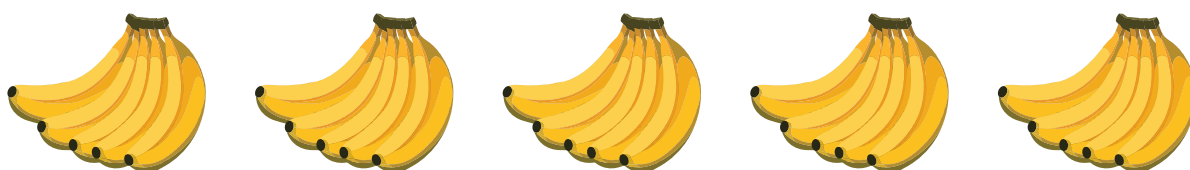
Write a multiplication equation to describe each model.

1)



$$\boxed{} \times \boxed{} = \boxed{}$$

2)



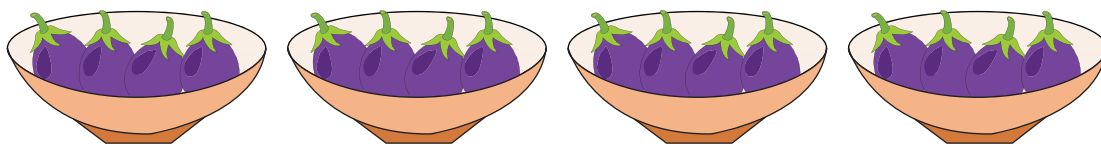
$$\boxed{} \times \boxed{} = \boxed{}$$

3)



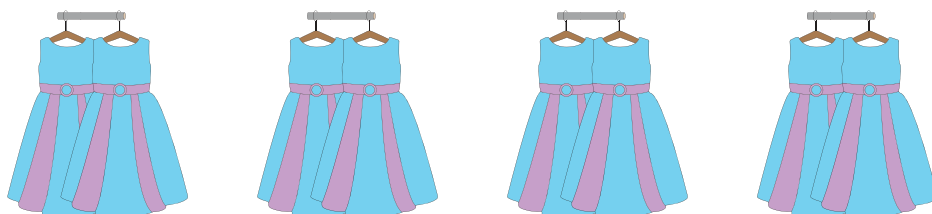
$$\boxed{} \times \boxed{} = \boxed{}$$

4)



$$\boxed{} \times \boxed{} = \boxed{}$$

5)



$$\boxed{} \times \boxed{} = \boxed{}$$