

## Converting from 12-Hour Clocks to 24-Hour Clocks

A) Convert each time from the 12-hour clock to the 24-hour clock.

1) 4:36 p.m. = \_\_\_\_\_

2) 5:20 a.m. = \_\_\_\_\_

3) 7:12 a.m. = \_\_\_\_\_

4) 2:54 p.m. = \_\_\_\_\_

# Preview

Become a member to unlock  
unrestricted access to both printable  
and online worksheets.

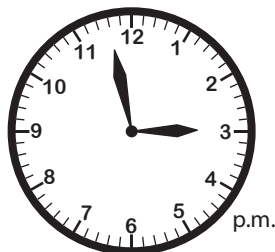


[www.tutoringhour.com](http://www.tutoringhour.com)

4)



5)



6)

